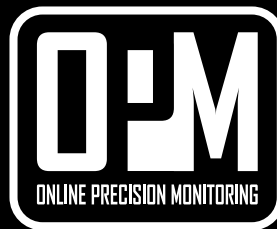




HEXICORE

www.hexicore.com.au



Online Precision Monitoring web solutions, brings you the richness and convenience of the internet world. Its reliability, streamlined simplicity, and advanced functionality make it the most worry-free web solution for your business.

The background of the entire page is a light gray hexagonal grid. A large, irregular cluster of hexagons in the upper half of the page is filled with vibrant, colorful, and blurred images of what appear to be microchips or circuit boards. The colors within these hexagons include reds, oranges, yellows, greens, and purples, creating a high-tech, digital aesthetic. The Hexicore logo is positioned in the top left corner, with the word 'HEXICORE' in a bold, sans-serif font. 'HEXI' is black and 'CORE' is red.

HEXICORE

without notice. The example companies, organizations, products, people and events depicted herein are fictitious unless otherwise noted. No association with any real company organization, product, person or event is intended or should be inferred.

Copyright © Hexicore. All rights reserved.

Hexicore may have patents or pending patent applications, trademarks, copyrights, or other intellectual property rights covering subject matters in this document.

Hexicore, and OPM are registered trademarks and Hexicore logo, and the OPM logo are trademarks of Hexicore. Other products and company names mentioned herein may be trademarks of their respective owners.

ONLINE PRECISION MONITORING



WELCOME

ONLINE PRECISION MONITORING.

OPM

Welcome to Hecicore Online Precision Monitoring (OPM). Working with OPM is more fun and productive than ever. OPM is more accessible over the internet. OPM features help you work smarter, faster, and more efficiently, and what you've always wanted to do is now possible.

This document introduces you to OPM. It shows you the most common tasks, provides you with tips, and points you to the fun and exciting features that come with OPM.

If you want to explore OPM in more depth or learn more about OPM and enhance your experience by visiting the Hecicore web site. Learn more about new features, get additional tools and tips. New service benefits constantly being added, Hecicore can enhance your productivity and help you discover the full potential of OPM.



CONTENTS

ONLINE PRECISION MONITORING AT A GLANCE.

OPM

Welcome	01
Contents	01
Web Solutions Specialist	02
Overview	03
Security.	04
Our Team	04
What our clients say	05
Dashboards and Infographics	06-07
Charts and Graphs	08-09
Maps and Geography	10-11
3-D Diagrams	12
Help and Support	13
OPM Interface	14
OPM Tools	15
LoRaWAN	16
LoRa	16



WEB SOLUTIONS SPECIALIST

DESIGNED FOR COMPANIES.

OPM

Since most of your time should be spent managing your business instead of your data, OPM web solutions give you the necessary information quickly and easily.

OPM web solutions are an extension of your company. Whatever your style or activity, we have an option for you.

WEB SOLUTIONS FOR BUSINESSES.

Navigation around OPM web solutions is easier than ever, thanks to the way OPM is laid out. Using internet base web pages, OPM is accessible from anywhere and from any device with a internet connection.

THE QUICK AND EASY WAY TO MANAGE INFORMATION.

CROSS PLATFORM COMPATIBILITY.

OPM introduces a new way to work on a range of devices, including desktops, laptops, tablets, and smartphones, so you can spend time analysing, rather than accessing and setting up information.

ACCESSABLE BY POPULAR WEB BROWSERS.

THE IMPORTANCE OF SECURITY.

In addition to providing security, logging on identification allows Hexicore to save your personal settings such as your recently used layout and design.

THE WORLD IS BECOMING INCREASINGLY CONNECTED TO THE INTERNET.

WHATEVER YOU'RE BUSINESS, WE'RE HERE TO HELP.

Because OPM web solutions is customizable, what appears on your screen may vary slightly from the illustrations in this booklet. You may also notice slight differences in how OPM web solution responds.

WE HAVE PRODUCTS AND TOOLS THAT COULD HELP STREAMLINE YOUR BUSINESS.



OVERVIEW

SUMMARY OF WHAT WE DO.

OPM

OPM sets a new standard for web based software. Built-in innovation features let you focus on your analysis, not your data. You can communicate over the internet more easily than ever. Using internet tools included with OPM web solutions.

- Intelligent technology - built-in intelligence that senses what your business wants to do and produces the results you want. So routine tasks are automatic and complex jobs are easier.
- Charts are visually appealing and makes it easy for users to see comparisons, patterns, and trends in data.
- Entirely flexible, table gives you the freedom to arrange your work just the way you like. Convert table into CSV or PDF formats.
- Responsive layout, prepared to be used on different resolutions and devices. Mobile phones to desktop computers.
- Cross platform compatibility - accessible by popular web browsers.
- Resources within our help system will help you about our web solutions and find answers to questions you may have.
- Dashboards take data from different sources and aggregate them into an easy-to-digest form so you can make informed decisions.
- While security may not be the most exciting topic, the fact is that security is taking on an ever-greater importance as devices become increasingly connected to the internet.

HEXICORE

WE CREATE MEANINGFUL INTERFACES THAT WORK.

It's always best to be update-to-date with the latest version of your web browser which takes advantage of new technologies, capabilities and features.

SEAMLESS INTEGRATION BETWEEN TECHNOLOGIES.

ACCESS THE POWER OF INFORMATION.

Enhance the OPM experience by visiting the Hexicore web site. Learn more about new features, get additional tools and tips. New service benefits constantly being added, Hexicore can enhance your productivity and help you discover the full potential of OPM.

EVERYTHING YOU NEED, NOW IN ONE PLACE.

3

OPM



SECURITY

THE WORLD IS BECOMING INCREASINGLY CONNECTED.

OPM

Establishing security protects sensitive data regardless of what program is used to access the file. When you start OPM, you may be prompted to log on OPM. In many situations, you may need to prevent curious or malicious end users from accidentally or intentionally damaging the file.

In addition to providing security, logging on identification allows Hexicore to save your personal settings such as your recently used layout and design.

There are three types of log on that can be used within Hexicore web solutions:

- User ID and Passcode.
- User Name and Password.
- Two Factor Authentication.



OUR TEAM

STRIVING FOR EXCELLENCE.

OPM

We are a web solutions developer based in Melbourne, Victoria, Australia. Striving for excellence, simplicity and perfection in developing web products.



Kaj Tapani
Chief Executive Officer



John Lapvetelainen
Creative Director



Adam Smith
Managing Director

We are constantly working to improve your experience and improve device functionality, as well as features to support new devices.



WHAT OUR CLIENTS SAY...

WE ARE PASSIONATE, CREATIVE, AND INNOVATIVE.



“

Our Envelope Overprint departments process in excess of 100 jobs per day with varying degree of specifications and due dates. When I first joined Australian Envelopes the Planning process in the Overprint department was manual and extremely time consuming. The Customer Service and Sales Staff frequently had to visit or call the Department Manager to find out the status of the customer job and at times request a planning modification.

”

Having worked with Hexicore on another project for a different organisation I asked him to help me make the jobs visible to the organisation and optimise the planning process. It was a first for the Business but the results were outstanding. Jobs became visible and efficiencies/costs improved significantly. With time we cascades the system across every other state with similar results.

Nick Mones (CEO Australian Envelopes)

“

Unique Micro Design (UMD) are proud to be an authorised Solution Partners and Distributors for the full range of Hexicore suite of products, as it brings to life the data we capture, and enables UMD to provide full stack Industrial Analytics solutions based around Hexicore cloud software and UMD's ICADA platforms to provide asset visibility encompassing sensors, inventory, assets and location data.

”

Geoffrey Ramadan (CEO Unique Micro Design)

ONLINE PRECISION MONITORING

5 OPM



DPM





Dashboards take data from different sources and aggregate them into an easy-to-read form.

Dashboards capabilities with OPM:

- Overall Equipment Effectiveness.
- Measure moisture and temperature.
- Counters and barcodes data.
- SMS alerts for out of spec.
- E-Mail notifications.
- Amount of traffic.
- Other sensor data.

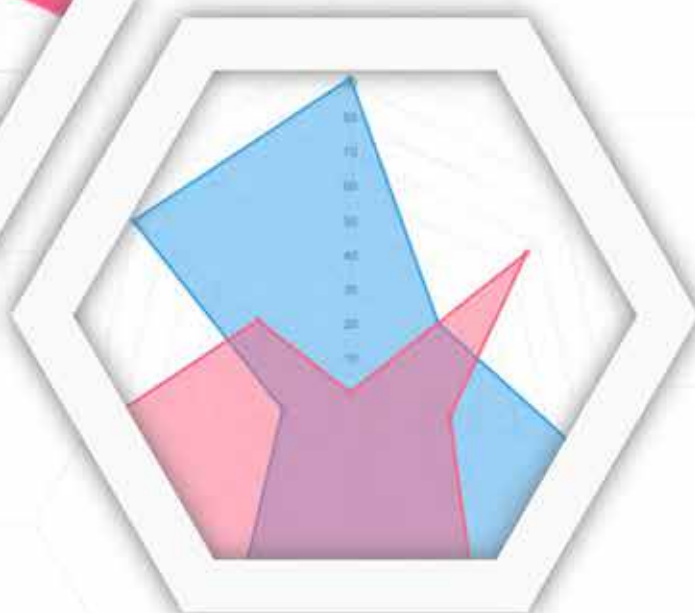
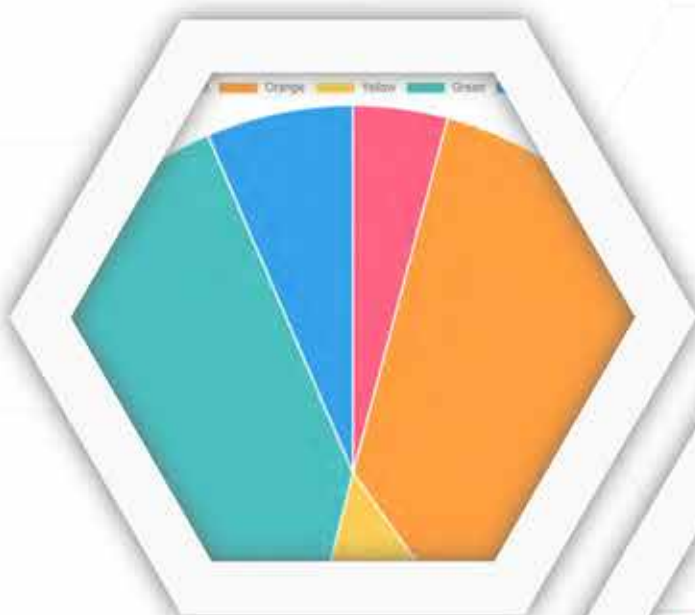


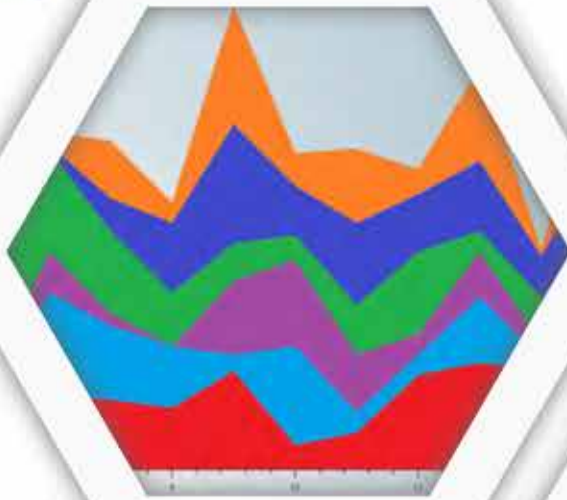


CHARTS & GRAPHS

VIEW WEEKLY, MONTHLY AND YEARLY STATS.

OPM

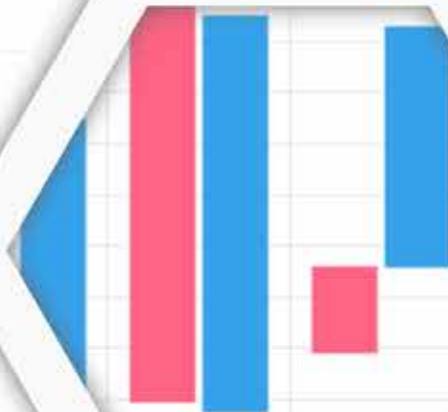




Charts can take a large variety of forms, however there are common features that provide the chart with its ability to extract meaning from data.

Chart types supported by OPM:

- Bar / Column.
- Line / Area.
- Pie / Doughnut.
- Bubble / Scatter.
- Radar.
- Polar.



HEXICORE



MAPS & GEOGRAPHY

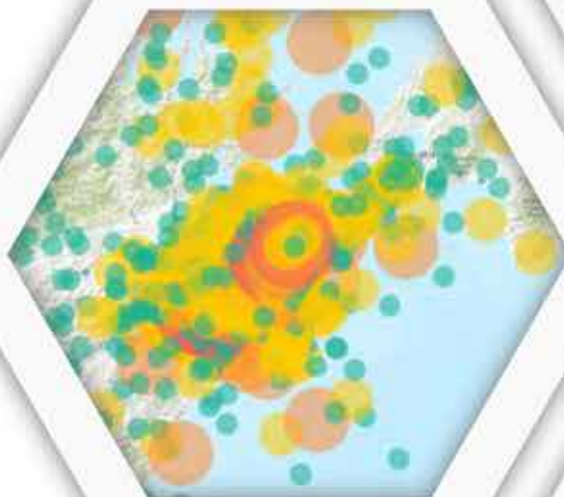
TRACK, ANALYZE, AND IMPROVE.

OPM

Whether you running a orchard, tracking a car or a cow... whatever you do, OPM web solutions can track it. The statistics recorded during each activity let you analyze the performance and improve on it next time.

Map data types supported by OPM:

- GPS coordinates.
- Region / Area coordinates.
- Heat frequency.
- Heat intensity.
- Bubble scale.
- Colour scale.
- Value markers.
- Animated markers.







3-D DIAGRAMS

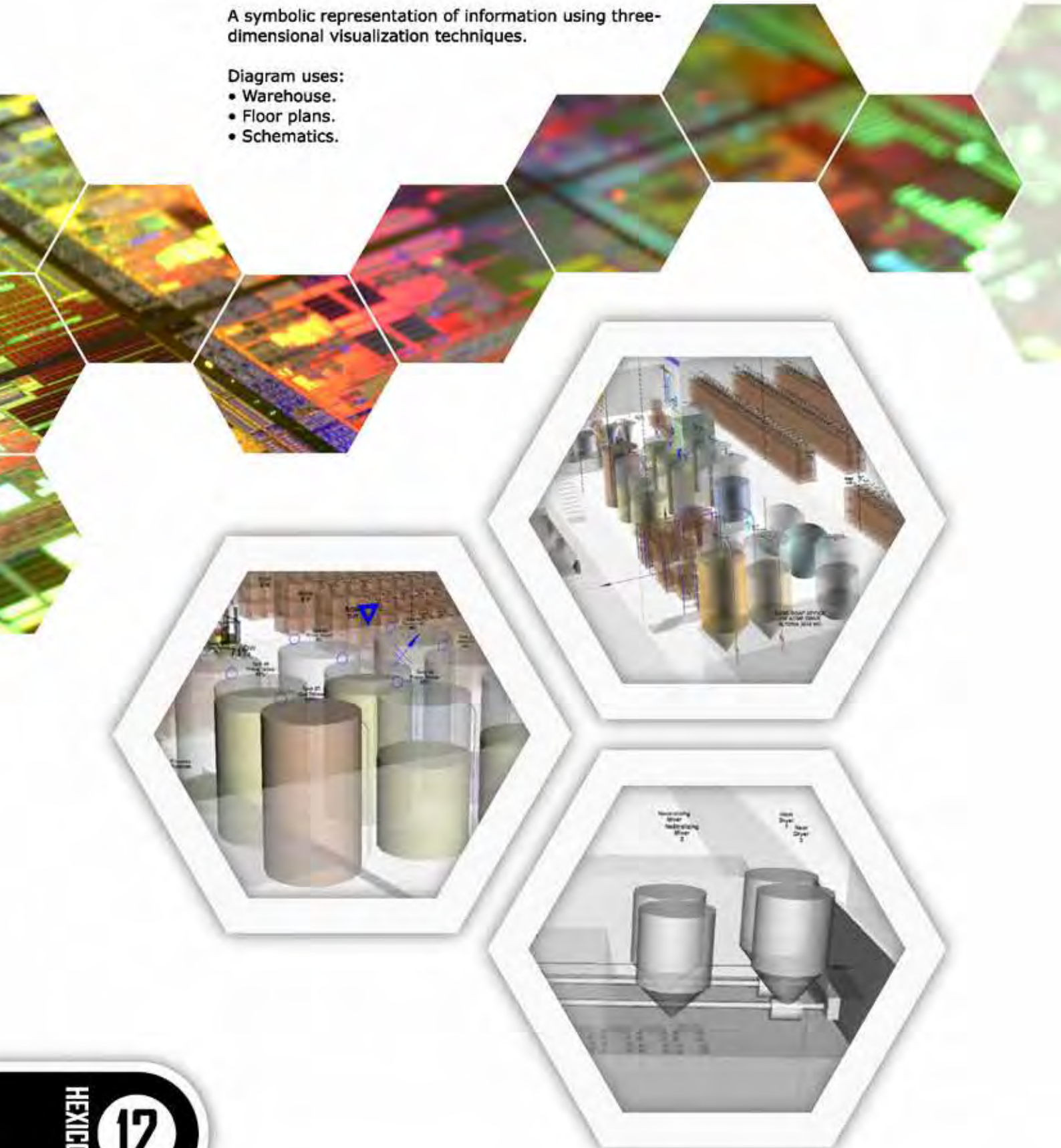
THREE-DIMENSIONAL VISUALIZATION TECHNIQUES.

OPM

A symbolic representation of information using three-dimensional visualization techniques.

Diagram uses:

- Warehouse.
- Floor plans.
- Schematics.





HELP & SUPPORT

USING HTML TO FORMAT AND DISPLAY TOPICS.

OPM

If you have a specific question about a feature or procedure or want general information, try the following resources, all of which are part of the OPM package.

OPM Help is your principle source of information about OPM, always available, OPM Help provides you with links to web-based resources and topics. More importantly, OPM Help describes how to perform a wide variety of tasks.

No matter how familiar you are with the internet or with OPM, you'll find the interactive demos helpful.

Glossary OPM Web Solutions.

P

Performance

(Cycle * Volume) / Minute or
(Volume / Uptime) / Theory. Represents
the speed at which the Work Center
is performing or its designed speed.
The faster the theoretical performance,
the accounted for using, more time
than it takes and less time.

Period The total length of time for
a cycle.

Plan (Cycle * Quantity)

Represents the predicted
quantity of work to be
completed.

Standard Rate

PREFACE

Introduction to the OPM System Agreement
and the OPM System.

OPM System Overview and the OPM System.

ABOUT

Introduction to the OPM System, including the OPM System
and the OPM System.

Introduction to the OPM System, including the OPM System
and the OPM System.

CHAPTER ONE: WELCOME

Introduction to the OPM System.

Introduction to the OPM System.

CHAPTER TWO: THE BASICS

Introduction to the OPM System.

Introduction to the OPM System.

Introduction to the OPM System.

Introduction to the OPM System.

Introduction to the OPM System.



Pie Chart

There are two types of graphs that display
data in a visual way. Each has its own
use. The first is the Pie Chart. The second
is the Bar Chart. The third is the
Line Chart. The fourth is the
Area Chart. The fifth is the
Scatter Plot. The sixth is the
Histogram. The seventh is the
Box Plot. The eighth is the
Dot Plot. The ninth is the
Radar Chart. The tenth is the
Bubble Chart. The eleventh is the
Treemap. The twelfth is the
Sankey Diagram. The thirteenth is the
Chord Diagram. The fourteenth is the
Force Directed Graph. The fifteenth is the
Hierarchical Chart. The sixteenth is the
Treemap. The seventeenth is the
Sankey Diagram. The eighteenth is the
Chord Diagram. The nineteenth is the
Force Directed Graph. The twentieth is the
Hierarchical Chart.



Area Chart

There are two types of graphs that display
data in a visual way. Each has its own
use. The first is the Pie Chart. The second
is the Bar Chart. The third is the
Line Chart. The fourth is the
Area Chart. The fifth is the
Scatter Plot. The sixth is the
Histogram. The seventh is the
Box Plot. The eighth is the
Dot Plot. The ninth is the
Radar Chart. The tenth is the
Bubble Chart. The eleventh is the
Treemap. The twelfth is the
Sankey Diagram. The thirteenth is the
Chord Diagram. The fourteenth is the
Force Directed Graph. The fifteenth is the
Hierarchical Chart.



OPM INTERFACE

SIMPLE GRAPHICAL USER INTERFACE.

OPM

The web panels in the OPM interface fall into three major types. The shortcut panel (left) is a panel that usually displays choices that appear tiered. The property panel (right) arguably the most important tool panel in OPM nearly all the work done by users revolves around the property panel. And the workspace area is where the page contents is displayed.



Shortcut Panel

A solution is a collection of web pages, which are themselves collections of files. It's through the shortcut panel that you get access to the files in your solution.

Workspace

You have access to a wealth of information in the workspace, from up-to-the-minute data and charts, to geographical maps. Everything and anything is possible in the workspace.

Property Panel

The properties panel (appears far right when needed) you can get and set properties for the user interface items. You can also use this panel to get help about the contents being viewed, settings for the solution, pages, and files.

ONLINE PRECISION MONITORING



OPM TOOLS

GET THE ESSENTIAL TOOLS THAT COMES WITH OPM.



HEXICORE

Easily configure with properties.

View crucial statistics.

See what you want with settings.

Extensive help system.

Navigate with simple GUI interface.

The screenshot displays the HEXICORE web application interface. It features a top navigation bar with icons for Design, Settings, Help, and Statistics. The main content area is divided into several sections: Help & Support, Getting Help, Settings, Related Topics, About, Give us feedback, End-User License Agreement, Design & Properties, Scenario / Map / Data / Load, Statistics & Configuration, Storage, Performance Timing, Settings & Environment, Open/Close Widget, Show/Hide Menu, and Clock & UTC. The interface is designed to be user-friendly and informative, providing a comprehensive overview of the application's capabilities and settings.



LoRaWAN

What is LoRaWAN?

OPM

The LoRaWAN protocol is a Low Power Wide Area Networking (LPWAN) communication protocol that functions on LoRa.

Characteristics of LoRaWAN technology:

- Long range communication up to 16 kilometers in line of sight.
- Long battery duration of up to 10 years.
- Low cost for devices and maintenance.
- License-free radio spectrum but region-specific regulations apply.
- Low power but has a limited payload size of 51 bytes to 241 bytes.



LoRaWAN®



LoRa

What is LoRa?

OPM

LoRa is a wireless audio frequency technology that operates in a license-free radio frequency spectrum.



LoRa

HEXICORE

16



OTHER OPM FEATURES

COMPONENTS TO ASSIST YOU.

OPM

Hexicore OPM offers a step by step visual environment and integrated high-performance components to assist you in implementing this web solutions software system.

For ease-of-use:

- Best fit columns.
- Quick sort speeds that simplifies data sorting.
- Extensive help system at your fingertips.
- Precise control using properties.

For managing and presenting:

- Geographical maps.
- Chart support.
- Table support.
- Date control.
- Data filtering.
- Reports and printing.

Engine capabilities:

- Input masks.
- Required field support.
- Timer interval support.
- Group, user and data security.
- Data encryption.

For data sharing and consistency:

- Tooltips
- Import and export capabilities.

For informing and communicating:

- SMS alerts for out of specification.
- E-Mail notifications.

Web server capabilities:

- Virtual Private Network (VPN).
- Blistering server speeds.

HEXICORE

ONLINE PRECISION MONITORING



HEXICORE
Web Solutions Developer

Mail: Hexicore Pty. Ltd.
PO Box 2185
399 Melton Highway
TAYLORS LAKES, VIC, 3038
AUSTRALIA

Phone: 0409 591 020
International: +61 409 591 020
E-Mail: info@hexicore.com.au
Website: www.hexicore.com.au

Distributed by



**UNIQUE
MICRO
DESIGN**
...Engineering IoT Solutions

03 9582 7000 | sales@umd.com.au | www.umd.com.au
1/200 Wellington Road Clayton, VIC, 3168



HEXICORE



Copyright © Hexicore. All rights reserved.

Hexicore, and OPM are registered trademarks and Hexicore logo, and the OPM logo are trademarks of Hexicore.